

**Notice of a public meeting of
SACRE (Standing Advisory Council on Religious Education)**

To: Group A
Such Christian denominations and other religious denominations as, in the opinion of the Authority, will approximately reflect the principal religious traditions in the area.

Karen Vincent (Faith/Catholic)
Penny Coppin-Siddall (Faith/ The Church of Jesus Christ of Latter Day Saints)
Imam Amar (Faith/Muslim)
Ben Rich (Vice Chair) (Faith/Jewish)
Mark Jones (Faith/Buddhist)
Fleur Kennedy (Faith/Bahai'i)
Susan Guiver (Faith/Humanist)
Dee Boyle (Faith/Unitarian, Buddhist, Pagan)
Tony Lawton (Faith/Catholic)
Professor Avtar Matharu (Faith/Sikh)

Group B
A groups of persons representing The Church of England.

Sue Bland (CoE)
Joseph Everdell (CoE)

Group C
A group of persons to represent such associations representing teachers as, in the opinion of the authority, ought to be represented, having regard to the circumstances of the area.

Taco Michiels (Joseph Rowntree School)

Group D
A group of persons representing the City of York Council. In this case of Elected Members appointment to this group should ensure political balance and state

which political group they represent. As an alternative, the Council may appoint representatives such as a governors association.

Cllr Robert Webb (Chair) (City of York Council)

Cllr Emilie Knight (City of York Council)

Cllr Martin Rowley BEM (City of York Council)

Cllr Sarah Wilson (City of York Council)

LA Officer

Maxine Squire (Assistant Director Education and Skills,
City of York Council)

Date: Thursday, 30 April 2026

Time: 6.00 pm

Venue: West Offices - Station Rise, York YO1 6GA

AGENDA

1. Welcome and Introductions

To welcome Susan Guiver (Humanist) and Professor Avtar Matharu (Sikh) to SACRE Group A.

2. Apologies for Absence and Declarations of Interest (Pages 5 - 6)

To receive and note apologies for absence.

At this point in the meeting, Members are asked to declare any disclosable pecuniary interest or other registerable interest they might have in respect of business on this agenda, if they have not already done so in advance on the Register of Interests. The disclosure must include the nature of the interest.

An interest must also be disclosed in the meeting when it becomes apparent to the member during the meeting.

[Please see attached sheet for further guidance for Members]

3. **Minutes and matters arising from the minutes** (Pages 7 - 12)
To approve and sign the minutes of the meetings held on 14 October 2025 (attached) and 10 March 2026 (to follow).
4. **SACRE Annual Report** (Pages 13 - 20)
To approve the SACRE Annual Report.
5. **Update from Interfaith**
To receive an update from Interfaith.
6. **SACRE development plan: Update on teacher engagement plan**
To receive an update on the teacher engagement plan.
7. **Feedback from SACRE visit to Joseph Rowntree School, Weds 25 March** (Pages 21 - 28)
To provide feedback on the visit.
8. **NASACRE News Issue 3** (Pages 29 - 38)
Latest news and updates from NASCARE.
9. **Correspondence on Complaints/Determinations**
A verbal update will be given on complaints received and the determinations in respect of those complaints.
10. **Any other business**
11. **Future meeting dates**
16 June 2026 at 6.00pm at West Offices

Democracy Officer

Angela Bielby

Contact Details:

Telephone – (01904) 552599

Email – a.bielby@york.gov.co.uk

For more information about any of the following please contact the Democratic Services Officer responsible for servicing this meeting:

- Registering to speak
- Business of the meeting
- Any special arrangements
- Copies of reports and
- For receiving reports in other formats

Contact details are set out above.

Alternative formats

If you require this document in an alternative language or format (e.g. large print, braille, Audio, BSL or Easy Read) you can:



Email us at: cycaccessteam@york.gov.uk



Call us: **01904 551550** and customer services will pass your request onto the Access Team.



Use our BSL Video Relay Service:
www.york.gov.uk/BSLInterpretingService
Select 'Switchboard' from the menu.



We can also translate into the following languages:

我們也用您們的語言提供這個信息 (Cantonese)

এই তথ্য আপনার নিজের ভাষায় দেয়া যেতে পারে। (Bengali)

Ta informacja może być dostarczona w twoim własnym języku. (Polish)

Bu bilgiyi kendi dilinizde almanız mümkündür. (Turkish)

یہ معلومات آپ کی اپنی زبان (ہولی) میں بھی مہیا کی جاسکتی ہیں۔ (Urdu)

Declarations of Interest – guidance for Members

- (1) Members must consider their interests, and act according to the following:

Type of Interest	You must
Disclosable Pecuniary Interests	Disclose the interest, not participate in the discussion or vote, and leave the meeting <u>unless</u> you have a dispensation.
Other Registrable Interests (Directly Related) OR Non-Registrable Interests (Directly Related)	Disclose the interest; speak on the item <u>only if</u> the public are also allowed to speak, but otherwise not participate in the discussion or vote, and leave the meeting <u>unless</u> you have a dispensation.
Other Registrable Interests (Affects) OR Non-Registrable Interests (Affects)	Disclose the interest; remain in the meeting, participate and vote <u>unless</u> the matter affects the financial interest or well-being: (a) to a greater extent than it affects the financial interest or well-being of a majority of inhabitants of the affected ward; and (b) a reasonable member of the public knowing all the facts would believe that it would affect your view of the wider public interest. In which case, speak on the item <u>only if</u> the public are also allowed to speak, but otherwise do not participate in the discussion or vote, and leave the meeting <u>unless</u> you have a dispensation.

- (2) Disclosable pecuniary interests relate to the Member concerned or their spouse/partner.
- (3) Members in arrears of Council Tax by more than two months must not vote in decisions on, or which might affect, budget calculations,

and must disclose at the meeting that this restriction applies to them. A failure to comply with these requirements is a criminal offence under section 106 of the Local Government Finance Act 1992.

City of York Council

Committee Minutes

Meeting	SACRE (Standing Advisory Council on Religious Education)
Date	14 October 2025
Present	<p><u>Group A</u> Penny Coppin-Siddall (Faith/ The Church of Jesus Christ of Latter Day Saints) Imam Amar (Faith/Muslim) Ben Rich (Vice Chair) (Faith/Jewish) Colin Lewisohn (Faith/Humanist) Dee Boyle (Faith/Unitarian, Buddhist, Pagan) Tony Lawton (Faith/Catholic)</p> <p><u>Group B</u> Joseph Everdell (CoE)</p> <p><u>Group C</u> Taco Michiels (Joseph Rowntree School)</p> <p><u>Group D</u> Cllr Robert Webb (Chair) (City of York Council) Cllr Emilie Knight (City of York Council) Cllr Sarah Wilson (City of York Council)</p>
In Attendance	<p><u>LA Officer</u> Maxine Squire (Assistant Director Education and Skills, City of York Council) Stephen Pett (RE Today)</p>
Apologies	Councillor Rowley, Karen Vincent, Fleur Kennedy, Sue Bland and Mark Jones

11. Apologies for Absence and Declarations of Interest (6:02pm)

Apologies for absence were received and noted for Karen Vincent, Mark Jones, Fleur Kennedy, Sue Bland and Cllr Rowley. Members were asked to declare at this point in the meeting any disclosable pecuniary interest or other registerable interest they might have in respect of business on the agenda, if they had not already done so in advance on the Register of Interests. There were none.

[Penny Coppin-Siddall arrived at 6.03pm]

12. Minutes and matters arising from the minutes (6:06pm)

Resolved: That the minutes of the meetings held on 15 May 2025 and 15 July 2025 be approved as a correct record.

Matters arising: Maxine Squire reported that the next school visit would be on 26 November 2025 to Joseph Rowntree School. Cllr Knight and Ben Rich undertook to attend the visit. Following a question from a Member regarding the informal meeting, Maxine Squire noted that she would send out an update. It was noted that the Chair had visited York Mosque and he noted that the informal meeting had been arranged to address flag flying and how SACRE could support RE teachers.

13. School Survey 2025 (6:13pm)

Maxine Squire reported that the School Survey focussed on a review of the Agreed Syllabus and areas where RE teachers needed additional support. She noted that there had been increased and more detailed responses due to the survey being online. She added that responses had been received from 7 out of 9 secondary schools and 18 primary schools and there had been a lot of support for the Agreed Syllabus with some suggested changes. Teachers also responded that they felt confident in teaching RE. The results showed that the demography of RE teachers was white British and a third were Christian, a third were of no faith and there was a younger demographic. The results also showed Christianity and Islam being the faiths taught in schools and teachers noted that they would benefit from more curriculum resources. The two teacher SACRE members were asked and explained their experience of teaching the Agreed Syllabus and Diocesan curriculum in their respective schools.

Resolved: That the contact lists, core offer and links to trusted sources of information would be updated.

Reason: To ensure the information was up to date.

14. Renewal of SACRE development plan (6:35pm)

Stephen Pett, RE Advisor at RE Today, whose syllabus was used by York SACRE, was introduced to members. Maxine Squire confirmed that the current Agreed Syllabus could be extended. Stephen Pett explained that RE Today was a charity and that York had used the RE Today syllabus since 2016. He outlined the Agreed Syllabus options from RE Today as being Option 1 the systematic approach and Option 2 the religion and world views approach. He detailed what was contained in each of their curriculum and the feedback from Gloucestershire schools using the Option 2 syllabus.

Stephen Pett was asked and confirmed that there could be a modernised version of the thematic approach. He was also asked and explained that the world view approach allowed for some thematic approach. A Member noted concern in moving away from what teachers said that they like as shown in the feedback from the school survey. A member asked if SACRE could have a third options for a modernised syllabus as well as Options 1 and 2.

Members discussed the Agreed Syllabus Conference, with Stephen Pett advising that RE Today could extend the licence by a year and that they could look at amendments to the current Agreed Syllabus. Following discussion, it was;

Resolved:

1. That the Agreed Syllabus be delayed by a year.
2. At the January meeting look at options for the Agreed Syllabus with Stephen Pett in attendance.
3. The Chair to email members for their views on the Agreed Syllabus

Reason: To renew the Agreed Syllabus.

15. Update from Interfaith (7.13pm)

Penny Coppin-Siddall noted that SACRE working with York Interfaith would be an opportunity to look at unity. Maxine Squire agreed to circulate their newsletter to York schools.

16. Views of RE Teachers (7.15pm)

The Chair explained that he wanted unity to be part of the syllabus and the new syllabus would be an opportunity to address unity between communities. A member asked if schools could be asked about how they were dealing with the issues with flags and Maxine

Squire explained that schools had been finding the situation very difficult with maintained Headteachers needing be careful and supportive around discussions regarding flag. The Chair noted that he was working with York Mosque regarding engagement with school. Following discussion the Chair noted that clarity was needed on what schools were doing and how SACRE could support them.

Resolved: Maxine Squire to ask schools about their approach to the flag flying at the Schools Forum meeting and following day and feedback to members at the next SACRE meeting.

Reason: For SACRE to see how it could support schools.

17. NASACRE News Issue 1 (7.31pm)

The latest NASACRE briefing was noted.

18. Correspondence on complaints/determinations (7.32pm)

It was noted that no complaints had been received, and no determinations submitted. It was noted that headteachers would be reminded of their duties in relation to RE and the need to submit determinations to SACRE.

19. Any Other Business (7.32pm)

It was agreed that the Chair and Maxine Squire would meet to discuss the Development Plan.

Maxine Squire reported that a Headteacher had reported an increase in parents withdrawing their children RE and she undertook to remind schools about the process for withdrawing children from RE.

20. Future meeting dates (7.35pm)

January date tbc

10 March 2026 at 6.00pm at West Offices

21 April 2026 at 6.00pm at West Offices

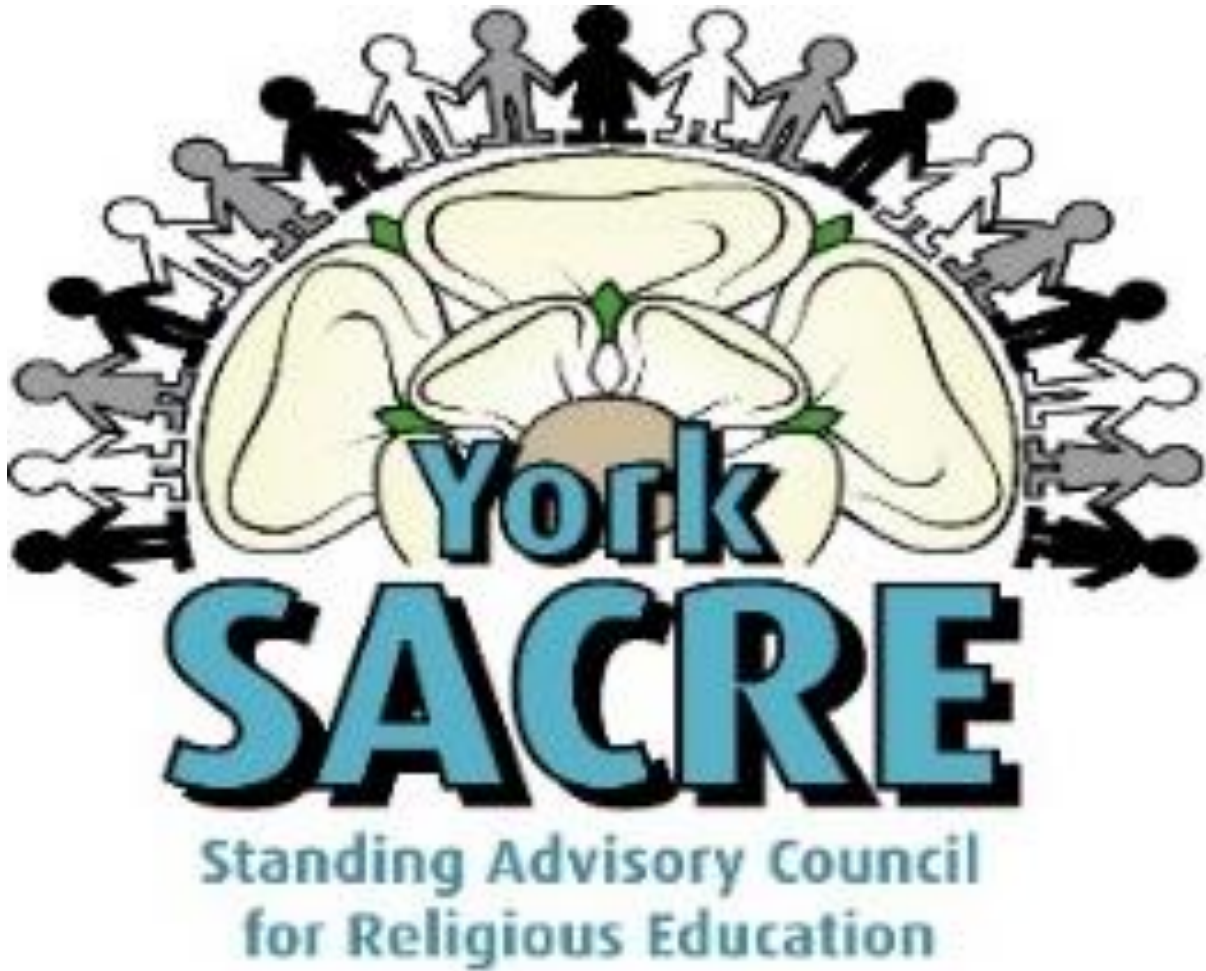
Cllr Webb, Chair

[The meeting started at 6.00 pm and finished at 7.35 pm].

This page is intentionally left blank



City of York SACRE Annual Report 2024-25



1. Introduction

Foreword by the Chair of SACRE

This municipal year has seen SACRE continue its good work and prepare for the future.

We have welcomed new members to the group whose strengths, knowledge and experience will help SACRE to develop a truly rounded view as we move into a review of the agreed syllabus.

The development of the new agreed syllabus will be a key task for the next 12 months and following a survey of teachers it was agreed that SACRE members would work to keep the good that currently exists in the current syllabus. Also try to minimise the changes to reduce teacher workload. And additionally make sure that the new syllabus covers all that SACRE have learnt over the last couple of years regarding students' desire to learn more about world religions and views.

I would like to thank all members for their excellent contributions and work ethic over the last year and also take the time to thank council officers who have provided expertise and support to make the work of the board run smoothly at all times

Cllr Bob Webb, Executive Member for Children and Education

Meeting and Attendance 2024-25

City of York SACRE met five times in the academic year 2024-25.

During the academic year 2024-25 City of York SACRE met in hybrid meetings. Ensuring and maintaining quoracy for SACRE meetings is a continuing area for improvement. The introduction of hybrid meetings has proved helpful, particularly for teachers in committee C, however, securing consistent attendance to ensure that all meetings throughout the year are quorate remains a priority.

York SACRE welcomed new members to Committee A in 2024-25 and this has increased the number of faith groups represented on SACRE.

The attendance, by Committee, is set out below:-

Committee	15 th October 2024	3 rd February 2025	24 th February 2025	15 th May 2025	15 th July 2025
Committee A Representing Other Denominations / Faith Communities	4	3	4	4	4
Committee B Representing the Church of England	1	0	1	2	1
Committee C Representing teachers	2	2	2	2	0
Committee D Representing City of York Council	3	3	4	3	2
LA Officer	1	1	1	1	1
Total	10 (Quorate)	8 (Inquorate)	11 (Quorate)	11 (Quorate)	7 (Inquorate)

A focus on the SACRE development plan, a report from the Local Authority officer (including a focus on standards) and a report on national NASACRE and RE professional organisations updates are standing items at each meeting. In 2024-25 there has also been a focus on beginning the review of the Agreed Syllabus.

2. RE (statutory responsibilities)

Locally agreed syllabus

There are 17 primary, 2 secondary and 1 special maintained schools who follow the City of York Locally Agreed Syllabus

There are 27 primary, 4 secondary and 1 special academies who have adopted the City of York Locally Agreed Syllabus

Separate regulations covering maintained special schools require them to ensure that as far as practicable every pupil receives opportunities to explore RE. The City of York Agreed Syllabus 2021-2026 includes specific guidance and support for Special Schools. Special Schools use the City of York Locally Agreed Syllabus, at least partially, and adapt it to meet the needs of the pupils.

Standards and monitoring of RE

There were 24 inspections of York Schools between September 2024 and July 2025. 19 primary schools were inspected, 1 secondary special school and 4 secondary schools. No concerns about R.E. were raised through these reports.

Key Stage 4 Results

	Entries	Grade 4+%	Grade 1-9%
2025	768	81.4	99.16

Key Stage 5 Results

4 out of the 5 11-18 secondary schools in the City plus York College entered students for the A2 level examinations in Religious Studies. Huntington had 16 entries; All Saints 14, Archbishop Holgate’s 12 and Fulford 9. York College entered 106.

Entries	A*	A	B	C	D	E	U	Total
172	6	32	37	51	27	9	12	174

Teaching, training and materials and advice for schools

The results from the annual survey to schools are being used to inform the SACRE Development Plan and to identify priorities for further training and advice for schools during the academic year 2024-25.

During 2024-25 York SACRE has continued to promote the support that can be accessed via the Regional R.E. Hub.

The 2024-25 Schools Survey has been used to gain feedback on the Agreed Syllabus to inform the review:

- The current syllabus is felt to be helpful and many responses felt it needed to be updated rather than completely changed
- Resources to support specific lessons were felt to be a need
- NATRE resources were identified as being detailed and helpful
- It was felt that study of the following faiths should be central in any revised syllabus: Buddhism, Sikhism, Christianity and Islam

The review of the Agreed Syllabus will be considered during 2026/27 and this will be completed in the context of the findings of the Curriculum and Assessment review.

City of York SACRE received no formal complaints regarding RE provision in the academic -year 2024-25.

3. Collective Worship

Besides Religious Education each local authority must work with its SACRE to monitor the provision of daily collective worship. As a result of changes to the Ofsted framework and in the absence of further guidance, the City of York SACRE published guidance in 2017 to support Collective Worship in schools in the City, which it continues to promote within schools. The guidance is available on the City of York SACRE website (www.york.gov.uk/sacre).

Schools may apply to SACRE for a determination in order to provide Collective Worship of a non-Christian or other form. As in previous years, no determinations were requested by schools.

There were no complaints registered with City of York SACRE in 2024/2025 in respect of collective worship.

4. Links with other bodies

City of York SACRE has a long- standing relationship with York Interfaith Group. York Interfaith Group have set up a mechanism to support visits and visitors to York schools.

City of York SACRE continues to support the York Holocaust Memorial Day event.

5. City of York SACRE's own arrangements

During the academic year 2024-25 City of York SACRE continued its close relationship with City of York Council's Democratic Services. An officer in the Local Authority's Democratic Services Section acts as Clerk to SACRE.

During 2024-25 a review of the SACRE development plan took place. This review of the development plan has been designed to ensure that SACRE has a clear focus on agreed areas of work which will require a programme of activity to be developed between SACRE meetings. This will then allow members to receive regular updates on the progress of actions identified in the development plan.

The visibility of York SACRE remains a priority, particularly to ensure that it is better understood by schools. This will be promoted through providing opportunities for hearing the voices and experiences of R.E. teachers to ensure that SACRE has a clear understanding of the quality and effectiveness of the Agreed Syllabus in York.

In 2024-25 the members of York SACRE also discussed the importance of supporting schools with work to support community cohesion and this will continue to be a focus for York SACRE as it looks to engage with the breadth of faith and non-faith communities in the City.

Review of the Agreed Syllabus	<ul style="list-style-type: none">• Members to ensure that a plan for the review of the syllabus has been actioned• SACRE to have more opportunities to engage with RE teachers and children and young people to understand the quality and impact of the Agreed Syllabus
Promote improvement in standards, quality of teaching and provision in RE	<ul style="list-style-type: none">• SACRE to sponsor a conference for RE teachers and run webinars linked to the Agreed Syllabus• Continue school visits with a focus on secondary schools• Promote the RE Hub resources
Contribute to cohesion across the community and promotion of social and racial harmony	<ul style="list-style-type: none">• Continue to build links to all faith groups in York• Continue to have a wide range of members on SACRE• Arrange an annual engagement event with children and young people

The people who serve on York SACRE are invited to do so by the Corporate Director of Children's Services and Education on the recommendation of various bodies in the local community with a concern for the religious education of school children. The law prescribes that there have to be four "committees" each comprising representatives of specified groups.

The current SACRE is constituted as follows:-

Committee A - Representing Other Denominations / Faith Communities:-

Karen Vincent joined August 2022 (Catholic)
 Ben Rich (Jewish)
 Keith Albans (Methodist)
 Iman Abid Salik (Muslim)
 Deborah Evans joined March 2021
 (Religious Society of Friends)
 Vacant (Salvation Army)
 Vacant (Sikh)
 Fleur Kennedy (York Baha'i Community)
 Penny Coppin-Siddall (The Church of Jesus Christ of Latter-day Saints)
 Colin Lewisohn (Humanist)
 Dee Boyle (Unitarian, Buddhist, Pagan)
 Mark Jones (Buddhist)

Committee B - Representing the Church of England:-

Sue Bland (Diocese of York)
 Joseph Everdell

Committee C - Representing Teachers:-

Taco Michiels (Joseph Rowntree)
 Diane Norton (University of York St John) joined SACRE in October 2023

Committee D - Representing the City of York Council are Councillors:-

Emilie Knight (Lib Dem)
 Martin Rowley (Con)
 Sarah Wilson (Labour)
 Bob Webb (Labour) appointed Chair June 2023

In attendance:-

Maxine Squire (Education Adviser)
 Angela Bielby (Clerk)

Finance – annual budget

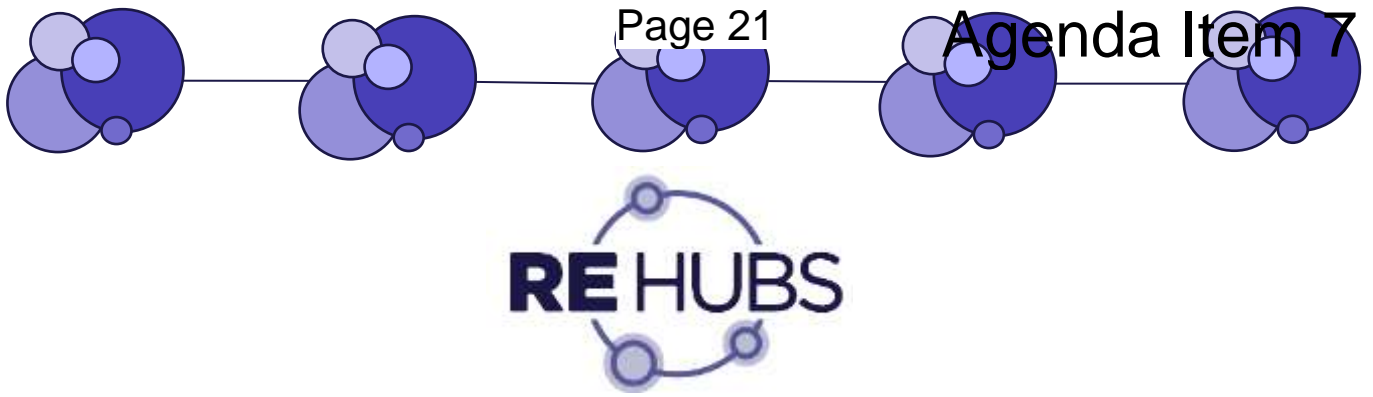
York's SACRE is assigned an annual budget of £3,500. A summary of spend in 2024-25 is shown in the table below:

Item		Total Spend
NASACRE annual membership fee for 2024-25		£115.00
NASACRE conference fees		£240.00
Total spend 2024-25		£355.00
Balance		£3,145.00

Circulation

This report is circulated to:

- NASACRE
- Department for Education
- City of York Council Children, Communities and Culture Scrutiny
- City of York schools
- SACRE members representative bodies



Summer term news 2026

What is new on the RE Hubs Website?

New Blogs

Jane Yates RE Hubs Lead for the North West has written on Nobody Stands Nowhere: Why Stories from the Real Lives of Religious and Non-Religious People Transform RE. You can read the blog here: [Blogs](#)



New pod on the RE Hubs website

We have a new pod on our website to support anyone thinking about becoming an RE Teacher. This section includes information on educational grants, subject knowledge enhancement courses and blogs and podcasts. Do take a look and share widely if you can: [Thinking about becoming an RE teacher?](#)

Thinking about becoming an RE teacher

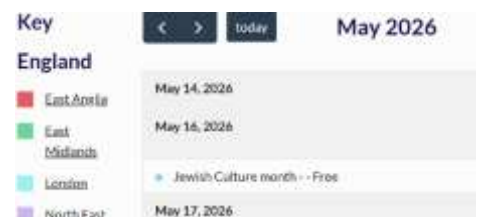
New resource on the website

Tackling issues in RE

In Tackling issues in RE there are all sorts of new resources we have found and signposted for teachers and schools in here. You can find it here: [Tackling issues in RE](#)

New event on the RE Hubs Calendar

The First Jewish culture month (16th May -16th June 2026) has been added to the RE Hubs Calendar. Clicking on the event takes you to a website with lots of information about the event. [Calendar](#)



Do you have events coming up? Why not put them on the RE Hubs calendar [using this form](#). It is free to advertise if your event is free and there is a small cost if it is a paid for course or event.



RE Hubs training

NATRE & RE Hubs CPD Training for Local Group Leaders – Muslim Voices Q&A panel

✿ Join us for our next session on 19 May 2026 6.30-8pm! It is for teachers who lead a local group – whether you are affiliated to NATRE, an LA or a diocese. If you haven't yet taken part, this is a great opportunity to connect, share ideas, and strengthen your RE leadership of your local group.

🔗 [Booking on this link.](#)




Leaders of Local Groups Meeting

19th May 6.30pm to 8pm

Book your place QR code for online meeting



This meeting will provide you as a local group leader:

- Top tips for growing your RE Network
- Meet leaders speaking about their networks, how they plan and develop them
- Learn more about teaching about Islam through our Muslim panel

				
KHADIJA MAHIR	WAQAR AHMEDI	SHAMMI RAHMAN	ZAMEER HUSSAIN	SHABNAM KHALIQ
RE Lead, Primary teacher, Culham St.Gabriels leadership programme, Barnet SACRE	Member of the Ahmadiyya Muslim Community, Head of RS, Prior's Field School, author of several books, runs CPD nationally and NATRE Executive	Race Equality Adviser and EDI consultant offering practical equity and inclusion consultancy for both corporate and education sectors.	Religious Studies Consultant for large Multi Academy Trust in London, has contributed to several books, including one on Shia Islam for teachers.	Head of RS, BlueCoat Oldham, leads CPD nationally and is leading the Oldham and Tameside RS secondary network and NATRE Executive

MAT RE Lead Network



MAT & Federation RE Leads meeting
Religious Education Networking Meeting

• 16 October 2026 - 4.00 - 5.30 PM
• 21 April 2026 - 4.00 - 5.30 PM

Speaker: Emma Goller, leader of the personal knowledge in RE research project

Brought to you by NATRE, AREIAC & CStG, this national network is a fantastic opportunity for you as the RE Leader across your MAT/Federation to explore and network high-quality RE.

The network provides opportunities for:

- High-quality leadership: Top tips from others in this role.
- Networking opportunity: Meet RE Leads in MATs across the country.
- High-quality RE: National updates & links to opportunities and resources for your MAT.

- We will be joined by **Dr Vanessa Ogden** for our next meeting which will be on **21 April 2026 from 4.00 - 5.30 PM** to learn more about the Curriculum and Assessment review report and what this means for RE.



Cost: FREE for NATRE and AREIAC members. If you are not a member of these organisations, then there is a fee of £100 to attend.

Access [flyer](#). **BOOK YOUR PLACE [HERE!](#)**

RE Hubs School Speaker & Places of Interest Training



As RE Hubs celebrates three years, our School Speaker and Places of Interest training continues to grow from strength to strength. What began as a small initiative to connect schools with authentic voices has become a national network of accredited speakers enriching pupils' learning in meaningful and memorable ways.

So far, 852 people have completed the training, reflecting the commitment of religion and belief communities, and individuals who want to support high-quality Religious Education (RE) & Religion, Values and Ethics (RVE). Teachers consistently tell us how much they value the opportunity to take pupils to places of interest and bring accredited speakers into the classroom—people who can share lived experiences, personal stories, and perspectives that deepen pupils' understanding of the diverse world around them.

We'd love to reach our next milestone of 1,000 accredited speakers. If you can signpost someone to the training, please do. The training is a free 90-minute session, leading to an RE Hubs kitemark and the option to be listed on our website. By joining our training or signposting potential speakers, you're helping create richer, more meaningful encounters for pupils.

Find out more about our training dates here: <https://www.re-hubs.uk/uploads/rehubs-training-flyer-v4-202526-4.pdf>

A spotlight on one of our Steering Group Organisations – AREIAC

AREIAC is an established professional association for RE leads across England and Wales. AREIAC members work on the frontline, training and supporting RE teachers new to the profession as well as supporting established RE teachers and RE regional leads supporting RE networks. AREIAC has a very diverse membership and the RE leads work within Local Authorities, SACRE's, Dioceses, Faith schools, MATs and Trusts, teacher training programmes, RE Policy and as curriculum writers for RE: they have a unique position in the RE community to provide support to Religious Education teachers and leaders.

Membership benefits include a termly newsletter, webinars, online conferences and RE support, in personal annual Conference and regular regional meetings with colleagues. Would you be interested in finding out more? Would you benefit from being a member of AREIAC? Please contact your regional lead: <https://www.arei.ac.org.uk/members-section>



Authorities, SACRE's,

AULRE/AREIAC Annual Conference 2026 Hosted at Birmingham City University

Dates: Monday 15th - Tuesday 16th June 2026

RE:Generation - Challenge and Evolution in the RE Curriculum

Association of University Lecturers in Religion and Education (AULRE) and Association of Religious Education Inspectors, Advisers and Consultants (AREIAC) is delighted to announce its 2026 joint conference, at Birmingham City University, City South Campus, Edgbaston, B15 3TN, 15th-16th June 2026.

The conference is open to everyone with an interest in religious education from the four nations of the United Kingdom and beyond. We welcome researchers, teacher educators, advisers and classroom teachers. Those working in aligned fields such as Education Studies, Moral Education, Philosophy, Religious Studies, and Theology as well as from within Childhood and Youth studies may also be interested in attending and offering presentations.

Booking link: <https://www.eventbrite.co.uk/e/aulreareiac-joint-conference-tickets-1982270887586?aff=oddtcreator>



Protecting What Matters: Towards a more confident, cohesive, and resilient United Kingdom.



Policy paper
Protecting What Matters: Towards a more confident, cohesive, and resilient United Kingdom

This publication sets out this government's vision for a fair, tolerant and decent country and the steps we are taking to tackle threats to social cohesion.

The government released a Policy Paper published on 9th March 2026. The report talks about RE, religious literacy and SACREs positively.

We will:

Drive up standards in the teaching of Religious Education. We will carefully consider including Religious Education in the national curriculum, subject to the sector reaching consensus on the content of, and approach to delivering, a curriculum. (Pg 24)

Working closely with faith and belief communities, we will expand Inter Faith Week, boost faith and belief literacy in government and wider society, and strengthen the role of Religious Education, including through improved engagement with Standing Advisory Councils for Religious Education (SACREs).

You can read the report here: <https://www.gov.uk/government/publications/protecting-what-matters-towards-a-more-confident-cohesive-and-resilient-united-kingdom>

NASACRE have written a statement on the report which you can read here:
<https://nasacre.org.uk/wp-content/uploads/2026/03/statement-26-03-10.pdf>

An interesting read – New PEW Research Report

Pew Research Center 

Do you need to believe in God to be moral and have good values? Views on this question vary widely around the

world, according to a 2025 Pew Research Centre survey. The report explores whether adults in 25 surveyed countries think belief in God is necessary to be moral and how those views have changed over time. You can read the report here: [Is belief in God needed to be moral? Many in US, other countries say no | Pew Research Center](#)

Building Bridges through Service

The Inter Faith Week 2025 Report is officially here! Under the theme “Community: Together We Serve,” this year’s programme reached new heights in fostering connection and social action. Key Highlights:

- 430+ activities hosted across the country.
- Stronger Partnerships: Increased collaboration between faith groups, local councils and businesses.
- Next-Gen Leadership: A significant rise in youth-led initiatives and digital engagement.

As we look towards 2026, our focus shifts to even earlier planning and deepening our impact through diverse national leadership and direct social action. Read the full report to see how we are growing together:

https://www.interfaithweek.org/uploads/IFW_Report_2026_Single_Pages.pdf

What’s new from Understanding Humanism

Understanding Humanism has launched a fantastic new **free video** to support young people’s understanding of **secularism**. Secularism presents a solution to the challenges of living together in a diverse society in which people identify with a wide variety of religions and beliefs. Its principles are supported by humanists as well as many religious people.



Secularists are people who believe that

1. There should be a **separation** between religious institutions and state institutions
2. Individuals should have **freedom** of religion or belief, and be free to reject or change their beliefs
3. *There should be **equal treatment** and no privilege or discrimination on the grounds of religion or belief*

*This beautiful new **animation** presents the case for secularism on the grounds of freedom, fairness, and peace. We hope it will provide a stimulating conversation starter in the classroom on how we can all live well together.*

Thoughtful Philosophy for Children (P4C)

Congratulations to Thoughtful P4C (formerly SAPERE P4C) who received the inaugural British Philosophical Association 2026 Prize for Service to UK Philosophy (not by professional academic philosophers). You can read more:

<https://www.thoughtful.org.uk/latest/thoughtful-wins-national-philosophy-award/>

Why not join the next free Consider P4C Taster event on 30 June, 2.15-3.00. To find out more and book: <https://www.thoughtful.org.uk/courses/consider-p4c/>

Thoughtful P4C has recently launched a brand-new website: www.thoughtful.org.uk

News from NATRE



Subject Leader Toolkits

NATRE have launched a new subject leader toolkit for secondary RE leads: a comprehensive collection of resources designed to support secondary school subject leaders in developing and enhancing the teaching and leadership of Religious Education.

This toolkit provides a wealth of guidance, practical strategies, and key resources to support Secondary RE Leads in leading Religious Education / Religion and Worldviews with confidence. Whether it is refining the curriculum, supporting staff development, or advocating for the subject's value, you'll find useful documents, research, and best-practice examples to strengthen subject leadership.

All materials in this toolkit have been compiled by experienced secondary members of the NATRE Executive and advisers from RE Today, ensuring high-quality, relevant, and practical support for subject leaders. You can access the toolkit here:

<https://natre.org.uk/secondary-subject-leader/>



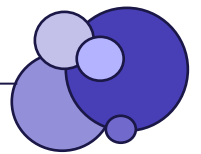
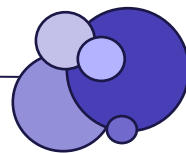
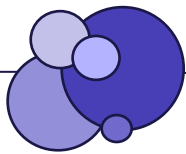
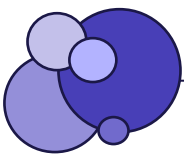
Primary RE Lead? don't forget there is also already a primary RE subject leader page here: <https://natre.org.uk/primary-re-curriculum/primary-subject-leader/>

REChatUK

NATRE's monthly Twitter forum, #REChatUK takes place on the first Monday of the month, from 8-9pm. These fast-paced, fun and informative discussions are a great way to discover new ideas, resources and conversations. The forum is also an effective place to network and meet new people on Twitter. Follow [@NATREupdate](https://twitter.com/NATREupdate) on Twitter, and the hashtag #REChatUK. An overview of the dates and themes for the rest of 2026 are below.

April 20th 2026	Outdoor RE
May 11th 2026	Case studies
June 1st 2026	PP & SEND in RE





July 6th 2026	Yearly Round up
September 7th 2026	ITE in RE
October 5th 2026	Assessment in RE
November 2nd 2026	Teaching to the Top
December 7th 2026	Adaptive Teaching

This page is intentionally left blank

Latest news and updates from NASACRE

[View this email in your browser](#)

NASACRE NEWS

Essential reading for SACREs

Issue: 3



This issue includes:

- [Chair's Welcome](#)
- [NASACRE Conference](#)
- [Webinars to support effective SACREs](#)
- [Future subscription charges](#)
- [Westhill/NASACRE Awards](#)
- [Curriculum and Assessment Review](#)
- [The Curriculum Time Survey](#)
- [NASACRE In Conversation](#)
- [RExChange](#)
- [Protecting What Matters](#)
- [Is your SACRE subscribed?](#)
- [Items for your next Agenda](#)

Chair's Welcome

Welcome to our third newsletter.

So much is going on at the moment and NASACRE Exec has been very active working on behalf of SACREs and both RE and collective worship.

The most obvious activities without a doubt have been our involvement with the Curriculum and Assessment Review and also Local Government reorganisation. We hope that those of you facing this had the opportunity to attend our webinar in January.

Protecting What Matters

The recent policy paper from the government states clearly the role RE and SACREs have to play in the plans for building stronger communities. More information about this can be seen [below](#) and also in our [statement on the website](#).

Speaking of the website, we have been working on a new design. The content will remain the same, but accessing and searching it will be clearer and more user-friendly, to use the jargon (unless, of course, the jargon has changed!). We will be seeking the views of some of you and anticipate it being up and running before the conference.

As you will see [below](#), the conference is shaping up very well. Have you booked your places yet? You only have until the **4th May** to do so! Remember the post-conference workshops as well. We are looking forward to seeing you in Liverpool on **Monday 18th May**.

An interesting social media development is NASACRE's presence on LinkedIn. This is a way for NASACRE to inform people of events, developments and documents. If you are on [LinkedIn](#) please follow us!

We move into the last term of the academic year and the schools you work with will be working hard with their pupils to prepare and support them for tests, exams, transitions and change.

We wish you all the best for the summer term and look forward to seeing you at conference.

Bill Moore
Chair

In-Person NASACRE Conference

SACREs - Bringing Communities Together

18 May 2026

Bookings close at 5pm on Monday 4th May



We are delighted that this year's conference is in the Hilton Hotel Liverpool: 3 Thomas Steers Way, Liverpool L1 8LW

It is a great location just a 15-minute walk from Liverpool Lime Street Station, and we have a wonderful large room

in which to run our day together.



There are networking opportunities over refreshments from 10:30am as well as over lunch. The conference starts formally at 11am and finishes by 3:30pm.

2026 is our first AGM as a CIO, and we have made small improvements to the conference day; for details, please [click here](#). All the booking information and prices can be found on the [Conference and AGM](#) page of the NASACRE website. The full programme for the day is also available on this page.

We have two fabulous keynote speakers that we are really looking forward to hearing.



In the morning we have Carrie Alderton, CEO of the Faith & Belief Forum, who will speak on “**Connection over Division: Lived Experience, Belonging, and the Role of RE in Social Cohesion**”.

In an era where belonging is increasingly contested and weaponised, RE has a vital role to play in helping young people understand themselves, others, and the communities they are part of. This keynote shares practical examples (from the work of the Faith & Belief Forum) of how lived experience in the classroom can foster connection, empathy, dialogue and belonging. For SACRE members, this is a timely opportunity to reflect on how their work can connect classrooms with families and communities, and to seize RE’s unique potential to strengthen social cohesion.



In the afternoon, we have Dr Vanessa Ogden, CEO of Mulberry Schools Trust, who will speak on “**Rejoicing in Difference: SACREs' Role in Building Social Harmony**”.

Having just completed running the Task and Finish work for the DfE to consider whether RE should become a subject within the National Curriculum, Dr Ogden will update SACREs on her findings as well as her vision for how SACREs can contribute to social harmony.

There will also be updates on our current WESTHILL/NASACRE grant awardees’ projects, as well as opportunities for your SACRE representatives to network and participate in thinking together about what our keynote speakers have said.

Elections

As a CIO, our constitution states that at every NASACRE AGM, one third of the elected

charity trustees retire from office (although they may seek nomination and re-election). Therefore, this year (and each year) there are 4 vacancies for trustees.

SACREs in paid-up membership are invited to nominate one candidate for election as trustee to serve on the NASACRE Executive; the normal length of service is 3 years.

Being a member of the Exec is an active role, requiring a commitment of time and energy to support the work of NASACRE in serving the SACREs. Exec members are volunteers and do not represent specific SACREs or faith groups.

In 2026 we are looking for new trustees who can help with finance, communications and conference organisation. Nominations are made [online](#) by **11th May 2026**.

Conference workshops 1st - 4th June 2026 online

We are very grateful for all your ideas for workshops and for some SACREs who are prepared to lead some excellent sessions for us in June. [Click here](#) to see our programme – there are 8 workshops to choose from.

Every conference delegate can attend 2 workshops.

SACREs can purchase attendance at 2 workshops for other SACRE members not at conference, or your whole SACRE - great, affordable CPD for SACRE members.

Here are a couple of quotations from SACRE members last year:

“Really useful to find out what other SACREs do - the workshops were timely and very useful.”

“Coming today has been extremely helpful.”

Webinars to support effective SACREs

NASACRE provides a comprehensive programme of webinars to develop SACRE members, and we are pleased with the success of this year’s programme so far.

Our final webinar of the academic year is on 25th June 2026 from 6:30-8pm:

So, you’ve joined your local SACRE...

This is a free webinar for any SACRE member, whether your SACRE is subscribed or not, running twice a year so that any new members joining SACRE during the year can come on training. It exists to help new SACRE members understand their role, how SACREs work, their statutory responsibilities and how members make their contribution to a SACRE’s work.

To book a place on this final session of the year please email: admin@nasacre.org.uk

Future subscription charges

The Executive has decided to combine the price of NASACRE membership and the webinar programme into one annual subscription charge. Many LAs have asked for us to have one fee, rather than processing 2 separate fees.

For 2026-27, our new combined subscription charge will be £185. This is a £10 increase from our 2025-26, to cover inflation and our rising costs.

Invoices will be sent to SACRE Clerks by the end of June.

Westhill/NASACRE Awards

There are four SACRE projects currently underway: Barnet, Camden, Haringey and Sunderland and each of them will be presenting for a few minutes at the conference in Liverpool.

It's not too early to begin thinking about whether your SACRE wants to apply for the money to fund a project, as the next round of bids needs to be submitted by 28th February 2027.

As current thinking around RE, worship and spirituality are focusing more on community cohesion, NASACRE has slightly altered the scope of the bids and is looking for projects that promote Unity, Community and Diversity. We are maintaining the current two-year cycle, so awards made in 2027 will have an opportunity to bid for up to £12,000, with projects to be completed by the summer of 2029. There will be an expectation that projects will be presented, either at conference, or in one of the workshops that follow.

All the essential information that a SACRE needs to read prior to completing an application form is on the [NASACRE website](#), along with the application form.

Curriculum and Assessment Review and Consultation on Programmes of Study

In March, having had the opportunity to read the draft programmes of study for RE, we signed a declaration recommending to the Secretary of State for Education that the draft programmes of study for RE be included in the National Curriculum. Whilst we recognise that this will not, in itself, be the solution to all the challenges facing RE, we did, on balance, believe that this is a bold and necessary step towards strengthening our subject and the work of SACREs.

We added a brief statement to the general response:

The NASACRE Executive has discussed the proposals and supports the draft

programmes; we appreciate the work and partnership approach that has been demonstrated throughout their development. We are keen to continue to work with others in the RE sector to strengthen and support the provision of high-quality religious education in all schools. NASACRE Exec recognises that, whilst this is a significant and timely step to secure the future of RE, much still remains to be done. We believe that an enhanced role for SACREs will contribute powerfully to achieving this and will do all we can to develop the capacity of SACREs to fulfil this role, in partnership with other RE bodies and the government.

We now await the Secretary of State's response and, assuming that she agrees to this, there will be a process of consultation and a Phase Two, in which colleagues in the RE sector will work together to implement the recommendations.

The Curriculum Time Survey

Thank you to those SACREs who have completed the Curriculum Time [survey](#). Early data shows that about 95% of Agreed Syllabuses have a recommended time for RE and for almost all it is 5% of curriculum time, or an hour a week, or similar. The survey is open to the end of April.

NASACRE In Conversation

We were delighted to have over 75 SACREs and 130 people present at our regional *NASACRE In Conversation* events in March.

The main points raised were:

- The importance of **local context** in SACRE structures and decision-making
- The growing role of SACREs in **community cohesion**
- The need for **inclusive and consultative approaches** in curriculum development
- Concerns on how the **right to partial withdrawal** is being used to withdraw from a study of certain religions by parents
- It is helpful to **network** on representation on SACREs, codes of conduct and a having/creating a SACRE vision
- A number of regions had SACREs sharing how they are **doing things jointly** as a cost-cutting solution to move forward and make resources go further.

The NASACRE Chairs will raise these points with the DfE and MHCLG in the summer term, to ensure the voice of SACREs is heard nationally. We continue to be grateful for RE Hub support in running these meetings, as well as for all the SACREs who were able to attend.

RExChange

RExChange is a biennial online conference organised by Culham St Gabriel's Trust, with a steering group made up of major RE organisations (e.g., NATRE, AULRE, AREIAC, TRS-UK, NASACRE). It brings together teachers, researchers, advisers, and wider RE professionals to share research, explore new ideas, and strengthen the link between classroom practice and academic scholarship. It will take place on **Friday 9th and Saturday 10th October 2026** and the [call for papers](#) is out now.

This would be a great opportunity for SACREs to showcase their effective work with schools. Even if you don't present, it is free to attend and booking will open in May.

Protecting What Matters: Towards a more confident, cohesive, and resilient United Kingdom

Through our contacts with both the DfE and the MHCLG, we have been able to raise awareness of the important role that SACREs play in promoting good education and positive community relationships. This is not just through RE, but also through collective worship, where schools share human and educational values. As bodies which hold different faith and belief values together, SACREs are well placed to support in an inclusive and educational way, exploring what we hold in common and how we experience, express and respond to our shared human values. This important role of SACREs has now been recognised and reflected in the recent policy paper *Protecting what matters: towards a more confident, cohesive and resilient United Kingdom*. This is an encouraging development involving the DfE and the MHCLG working together. NASACRE is exploring with them how SACREs can be strengthened and better supported.

Is your SACRE subscribed?

Subscribed SACREs have access to additional material on the NASACRE website and training webinars, as well as savings on AGM attendance and voting rights. The cost of the annual subscription is kept as low as possible. On the website there is a [document](#) listing all the advantages and giving details of how to subscribe if you are not already subscribed.

Invoices for the academic year 2026-27 will be sent to SACRE Clerks by the end of June. A new username and password will be sent to subscribed SACREs on 1st September.

Note there will be a new combined subscription and training charge of £185 for 2026-27 ([see above](#)).

Items for your next Agenda

- Check that your SACRE has subscribed and paid into the new NASACRE bank account (Account Number: 67410361 Sort Code: 08-92-99)
- Check that all the details for your SACRE are correct on the NASACRE [contacts page](#) and inform admin@nasacre.org.uk of any changes needed
- Book SACRE members for [conference](#)
- Check out the NASACRE [website](#) for all the latest news and information
- Revisit your SACRE's vision and values
- Follow NASACRE on [LinkedIn](#)



Copyright © 2026 NASACRE, All rights reserved.

[unsubscribe from this list](#) [update subscription preferences](#)



This page is intentionally left blank